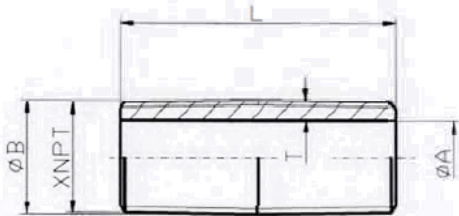


# Schedule 80 Welded Steel Pipe Nipples Black and Galvanized

## Specification Sheet

### FEATURES:

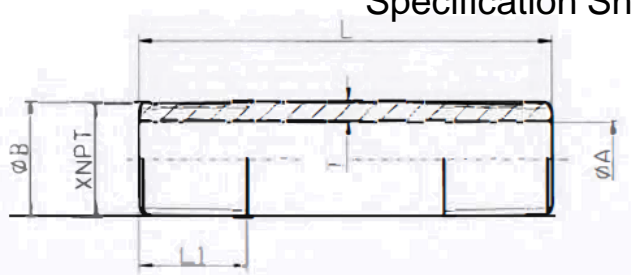
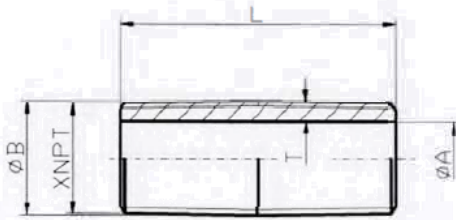
Material: ASTM A53  
 Dimensions: ASTM A733  
 Threads: ASME B1.20.1  
 Approvals: NSF61, NSF372 (Galvanized Only)  
 Availability: Stocked from 1/8" through 4" diameters



Part #	Size	A	B	L	L1	T (min)
NXB00CL	1/8XCLOSE	0.215	0.405	3/4	----	0.083
NXB00112	1/8X1-1/2	0.215	0.405	1-1/2	0.392	0.083
NXB002	1/8X2	0.215	0.405	2	0.392	0.083
NXB00212	1/8X2-1/2	0.215	0.405	2-1/2	0.392	0.083
NXB003	1/8X3	0.215	0.405	3	0.392	0.083
NXB00312	1/8X3-1/2	0.215	0.405	3-1/2	0.392	0.083
NXB004	1/8X4	0.215	0.405	4	0.392	0.083
NXB00412	1/8X4-1/2	0.215	0.405	4-1/2	0.392	0.083
NXB005	1/8X5	0.215	0.405	5	0.392	0.083
NXB00512	1/8X5-1/2	0.215	0.405	5-1/2	0.392	0.083
NXB006	1/8X6	0.215	0.405	6	0.392	0.083
NXB008	1/8X8	0.215	0.405	8	0.392	0.083
NXB0010	1/8X10	0.215	0.405	10	0.392	0.083
NXB0012	1/8X12	0.215	0.405	12	0.392	0.083
NXB01CL	1/4XCLOSE	0.302	0.540	7/8	----	0.104
NXB01112	1/4X1-1/2	0.302	0.540	1-1/2	0.595	0.104
NXB012	1/4X2	0.302	0.540	2	0.595	0.104
NXB01212	1/4X2-1/2	0.302	0.540	2-1/2	0.595	0.104
NXB013	1/4X3	0.302	0.540	3	0.595	0.104
NXB01312	1/4X3-1/2	0.302	0.540	3-1/2	0.595	0.104
NXB014	1/4X4	0.302	0.540	4	0.595	0.104
NXB01412	1/4X4-1/2	0.302	0.540	4-1/2	0.595	0.104
NXB015	1/4X5	0.302	0.540	5	0.595	0.104
NXB01512	1/4X5-1/2	0.302	0.540	5-1/2	0.595	0.104
NXB016	1/4X6	0.302	0.540	6	0.595	0.104
NXB017	1/4X7	0.302	0.540	7	0.595	0.104
NXB018	1/4X8	0.302	0.540	8	0.595	0.104
NXB0110	1/4X10	0.302	0.540	10	0.595	0.104
NXB0112	1/4X12	0.302	0.540	12	0.595	0.104

Part #	Size	A	B	L	L1	T (min)
NXB02CL	3/8XCLOSE	0.423	0.675	1	----	0.110
NXB02112	3/8X1-1/2	0.423	0.675	1-1/2	0.601	0.110
NXB022	3/8X2	0.423	0.675	2	0.601	0.110
NXB02212	3/8X2-1/2	0.423	0.675	2-1/2	0.601	0.110
NXB023	3/8X3	0.423	0.675	3	0.601	0.110
NXB02312	3/8X3-1/2	0.423	0.675	3-1/2	0.601	0.110
NXB024	3/8X4	0.423	0.675	4	0.601	0.110
NXB02412	3/8X4-1/2	0.423	0.675	4-1/2	0.601	0.110
NXB025	3/8X5	0.423	0.675	5	0.601	0.110
NXB02512	3/8X5-1/2	0.423	0.675	5-1/2	0.601	0.110
NXB026	3/8X6	0.423	0.675	6	0.601	0.110
NXB028	3/8X8	0.423	0.675	8	0.601	0.110
NXB0210	3/8X10	0.423	0.675	10	0.601	0.110
NXB0212	3/8X12	0.423	0.675	12	0.601	0.110
NXB03CL	1/2XCLOSE	0.546	0.840	1-1/8	----	0.129
NXB03112	1/2X1-1/2	0.546	0.840	1-1/2	0.669	0.129
NXB032	1/2X2	0.546	0.840	2	0.782	0.129
NXB03212	1/2X2-1/2	0.546	0.840	2-1/2	0.782	0.129
NXB033	1/2X3	0.546	0.840	3	0.782	0.129
NXB03312	1/2X3-1/2	0.546	0.840	3-1/2	0.782	0.129
NXB034	1/2X4	0.546	0.840	4	0.782	0.129
NXB03412	1/2X4-1/2	0.546	0.840	4-1/2	0.782	0.129
NXB035	1/2X5	0.546	0.840	5	0.782	0.129
NXB03512	1/2X5-1/2	0.546	0.840	5-1/2	0.782	0.129
NXB036	1/2X6	0.546	0.840	6	0.782	0.129
NXB03612	1/2X6-1/2	0.546	0.840	6-1/2	0.782	0.129
NXB037	1/2X7	0.546	0.840	7	0.782	0.129
NXB03712	1/2X7-1/2	0.546	0.840	7-1/2	0.782	0.129
NXB038	1/2X8	0.546	0.840	8	0.782	0.129

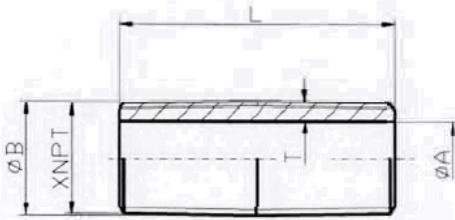
# Schedule 80 Welded Steel Pipe Nipples Black and Galvanized Specification Sheet



Part #	Size	A	B	L	L1	T (min)
NXB039	1/2X9	0.546	0.840	9	0.782	0.129
NXB0310	1/2X10	0.546	0.840	10	0.782	0.129
NXB0311	1/2X11	0.546	0.840	11	0.782	0.129
NXB0312	1/2X12	0.546	0.840	12	0.782	0.129
NXB04CL	3/4XCLOSE	0.742	1.050	1-3/8	----	0.135
NXB04112	3/4X1-1/2	0.742	1.050	1-1/2	0.794	0.135
NXB042	3/4X2	0.742	1.050	2	0.794	0.135
NXB04212	3/4X2-1/2	0.742	1.050	2-1/2	0.794	0.135
NXB043	3/4X3	0.742	1.050	3	0.794	0.135
NXB04312	3/4X3-1/2	0.742	1.050	3-1/2	0.794	0.135
NXB044	3/4X4	0.742	1.050	4	0.794	0.135
NXB04412	3/4X4-1/2	0.742	1.050	4-1/2	0.794	0.135
NXB045	3/4X5	0.742	1.050	5	0.794	0.135
NXB04512	3/4X5-1/2	0.742	1.050	5-1/2	0.794	0.135
NXB046	3/4X6	0.742	1.050	6	0.794	0.135
NXB04612	3/4X6-1/2	0.742	1.050	6-1/2	0.794	0.135
NXB047	3/4X7	0.742	1.050	7	0.794	0.135
NXB04712	3/4X7-1/2	0.742	1.050	7-1/2	0.794	0.135
NXB048	3/4X8	0.742	1.050	8	0.794	0.135
NXB049	3/4X9	0.742	1.050	9	0.794	0.135
NXB0410	3/4X10	0.742	1.050	10	0.794	0.135
NXB0412	3/4X12	0.742	1.050	12	0.794	0.135
NXB05CL	1XCLOSE	0.957	1.315	1-1/2	----	0.157
NXB052	1X2	0.957	1.315	2	0.985	0.157
NXB05212	1X2-1/2	0.957	1.315	2-1/2	0.985	0.157
NXB053	1X3	0.957	1.315	3	0.985	0.157
NXB05312	1X3-1/2	0.957	1.315	3-1/2	0.985	0.157
NXB05334	1X3-3/4	0.957	1.315	3-3/4	0.985	0.157
NXB054	1X4	0.957	1.315	4	0.985	0.157
NXB05412	1X4-1/2	0.957	1.315	4-1/2	0.985	0.157
NXB055	1X5	0.957	1.315	5	0.985	0.157
NXB05512	1X5-1/2	0.957	1.315	5-1/2	0.985	0.157
NXB056	1X6	0.957	1.315	6	0.985	0.157
NXB057	1X7	0.957	1.315	7	0.985	0.157
NXB058	1X8	0.957	1.315	8	0.985	0.157
NXB059	1X9	0.957	1.315	9	0.985	0.157
NXB0510	1X10	0.957	1.315	10	0.985	0.157

Part #	Size	A	B	L	L1	T (min)
NXB0511	1X11	0.957	1.315	11	0.985	0.157
NXB0512	1X12	0.957	1.315	12	0.985	0.157
NXB06CL	11/4XCLOSE	1.278	1.660	1-5/8	----	0.167
NXB062	11/4X2	1.278	1.660	2	0.906	0.167
NXB06212	11/4X2-1/2	1.278	1.660	2-1/2	1.009	0.167
NXB063	11/4X3	1.278	1.660	3	1.009	0.167
NXB06312	11/4X3-1/2	1.278	1.660	3-1/2	1.009	0.167
NXB064	11/4X4	1.278	1.660	4	1.009	0.167
NXB06412	11/4X4-1/2	1.278	1.660	4-1/2	1.009	0.167
NXB065	11/4X5	1.278	1.660	5	1.009	0.167
NXB06512	11/4X5-1/2	1.278	1.660	5-1/2	1.009	0.167
NXB066	11/4X6	1.278	1.660	6	1.009	0.167
NXB067	11/4X7	1.278	1.660	7	1.009	0.167
NXB068	11/4X8	1.278	1.660	8	1.009	0.167
NXB069	11/4X9	1.278	1.660	9	1.009	0.167
NXB0610	11/4X10	1.278	1.660	10	1.009	0.167
NXB0611	11/4X11	1.278	1.660	11	1.009	0.167
NXB0612	11/4X12	1.278	1.660	12	1.009	0.167
NXB07CL	11/2XCLOSE	1.5	1.900	1-3/4	----	0.175
NXB072	11/2X2	1.5	1.900	2	1.025	0.175
NXB07212	11/2X2-1/2	1.5	1.900	2-1/2	1.025	0.175
NXB073	11/2X3	1.5	1.900	3	1.025	0.175
NXB07312	11/2X3-1/2	1.5	1.900	3-1/2	1.025	0.175
NXB074	11/2X4	1.5	1.900	4	1.025	0.175
NXB07412	11/2X4-1/2	1.5	1.900	4-1/2	1.025	0.175
NXB075	11/2X5	1.5	1.900	5	1.025	0.175
NXB07512	11/2X5-1/2	1.5	1.900	5-1/2	1.025	0.175
NXB076	11/2X6	1.5	1.900	6	1.025	0.175
NXB077	11/2X7	1.5	1.900	7	1.025	0.175
NXB078	11/2X8	1.5	1.900	8	1.025	0.175
NXB079	11/2X9	1.5	1.900	9	1.025	0.175
NXB0710	11/2X10	1.5	1.900	10	1.025	0.175
NXB0711	11/2X11	1.5	1.900	11	1.025	0.175
NXB0712	11/2X12	1.5	1.900	12	1.025	0.175
NXB08CL	2XCLOSE	1.939	2.375	2	----	0.191
NXB08212	2X2-1/2	1.939	2.375	2-1/2	1.058	0.191
NXB083	2X3	1.939	2.375	3	1.058	0.191

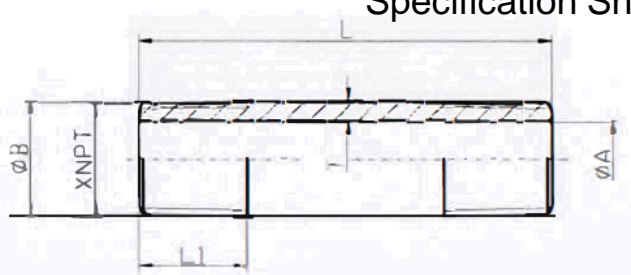
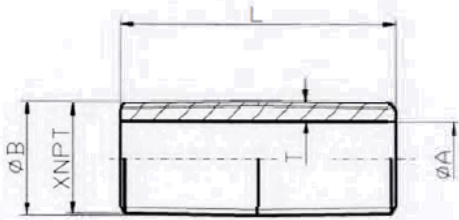
# Schedule 80 Welded Steel Pipe Nipples Black and Galvanized Specification Sheet



Part #	Size	A	B	L	L1	T (min)
NXB08312	2X3-1/2	1.939	2.375	3-1/2	1.058	0.191
NXB084	2X4	1.939	2.375	4	1.058	0.191
NXB08412	2X4-1/2	1.939	2.375	4-1/2	1.058	0.191
NXB085	2X5	1.939	2.375	5	1.058	0.191
NXB08512	2X5-1/2	1.939	2.375	5-1/2	1.058	0.191
NXB086	2X6	1.939	2.375	6	1.058	0.191
NXB087	2X7	1.939	2.375	7	1.058	0.191
NXB088	2X8	1.939	2.375	8	1.058	0.191
NXB089	2X9	1.939	2.375	9	1.058	0.191
NXB0810	2X10	1.939	2.375	10	1.058	0.191
NXB0811	2X11	1.939	2.375	11	1.058	0.191
NXB0812	2X12	1.939	2.375	12	1.058	0.191
NXB09CL	21/2XCLOSE	2.323	2.875	2-1/2	----	0.242
NXB093	21/2X3	2.323	2.875	3	1.571	0.242
NXB09312	21/2X3-1/2	2.323	2.875	3-1/2	1.571	0.242
NXB094	21/2X4	2.323	2.875	4	1.571	0.242
NXB09412	21/2X4-1/2	2.323	2.875	4-1/2	1.571	0.242
NXB095	21/2X5	2.323	2.875	5	1.571	0.242
NXB09512	21/2X5-1/2	2.323	2.875	5-1/2	1.571	0.242
NXB096	21/2X6	2.323	2.875	6	1.571	0.242
NXB097	21/2X7	2.323	2.875	7	1.571	0.242
NXB098	21/2X8	2.323	2.875	8	1.571	0.242
NXB099	21/2X9	2.323	2.875	9	1.571	0.242
NXB0910	21/2X10	2.323	2.875	10	1.571	0.242
NXB0911	21/2X11	2.323	2.875	11	1.571	0.242
NXB0912	21/2X12	2.323	2.875	12	1.571	0.242
NXB10CL	3XCLOSE	2.9	3.500	2-5/8	----	0.263
NXB103	3X3	2.9	3.500	3	1.181	0.263
NXB10312	3X3-1/2	2.9	3.500	3-1/2	1.634	0.263
NXB104	3X4	2.9	3.500	4	1.634	0.263
NXB10412	3X4-1/2	2.9	3.500	4-1/2	1.634	0.263
NXB105	3X5	2.9	3.500	5	1.634	0.263
NXB10512	3X5-1/2	2.9	3.500	5-1/2	1.634	0.263
NXB106	3X6	2.9	3.500	6	1.634	0.263
NXB107	3X7	2.9	3.500	7	1.634	0.263
NXB108	3X8	2.9	3.500	8	1.634	0.263
NXB109	3X9	2.9	3.500	9	1.634	0.263

Part #	Size	A	B	L	L1	T (min)
NXB1010	3X10	2.9	3.500	10	1.634	0.263
NXB1011	3X11	2.9	3.500	11	1.634	0.263
NXB1012	3X12	2.9	3.500	12	1.634	0.263
NXB11CL	4XCLOSE	3.826	4.500	2-7/8	----	0.295
NXB114	4X4	3.826	4.500	4	1.734	0.295
NXB11412	4X4-1/2	3.826	4.500	4-1/2	1.734	0.295
NXB115	4X5	3.826	4.500	5	1.734	0.295
NXB11512	4X5-1/2	3.826	4.500	5-1/2	1.734	0.295
NXB116	4X6	3.826	4.500	6	1.734	0.295
NXB117	4X7	3.826	4.500	7	1.734	0.295
NXB118	4X8	3.826	4.500	8	1.734	0.295
NXB119	4X9	3.826	4.500	9	1.734	0.295
NXB1110	4X10	3.826	4.500	10	1.734	0.295
NXB1111	4X11	3.826	4.500	11	1.734	0.295
NXB1112	4X12	3.826	4.500	12	1.734	0.295
NXG00CL	1/8XCLOSE	0.215	0.405	3/4	----	0.083
NXG00112	1/8X1-1/2	0.215	0.405	1-1/2	0.392	0.083
NXG002	1/8X2	0.215	0.405	2	0.392	0.083
NXG00212	1/8X2-1/2	0.215	0.405	2-1/2	0.392	0.083
NXG003	1/8X3	0.215	0.405	3	0.392	0.083
NXG00312	1/8X3-1/2	0.215	0.405	3-1/2	0.392	0.083
NXG004	1/8X4	0.215	0.405	4	0.392	0.083
NXG00412	1/8X4-1/2	0.215	0.405	4-1/2	0.392	0.083
NXG005	1/8X5	0.215	0.405	5	0.392	0.083
NXG00512	1/8X5-1/2	0.215	0.405	5-1/2	0.392	0.083
NXG006	1/8X6	0.215	0.405	6	0.392	0.083
NXG01CL	1/4XCLOSE	0.302	0.540	7/8	----	0.167
NXG01112	1/4X1-1/2	0.302	0.540	1-1/2	0.595	0.167
NXG012	1/4X2	0.302	0.540	2	0.595	0.167
NXG01212	1/4X2-1/2	0.302	0.540	2-1/2	0.595	0.167
NXG013	1/4X3	0.302	0.540	3	0.595	0.167
NXG01312	1/4X3-1/2	0.302	0.540	3-1/2	0.595	0.167
NXG014	1/4X4	0.302	0.540	4	0.595	0.167
NXG01412	1/4X4-1/2	0.302	0.540	4-1/2	0.595	0.167
NXG015	1/4X5	0.302	0.540	5	0.595	0.167
NXG01512	1/4X5-1/2	0.302	0.540	5-1/2	0.595	0.167
NXG016	1/4X6	0.302	0.540	6	0.595	0.167

# Schedule 80 Welded Steel Pipe Nipples Black and Galvanized Pre-Cut Specification Sheet



Part #	Size	A	B	L	L1	T (min)
NXG02CL	3/8XCLOSE	0.423	0.675	1	----	0.110
NXG02112	3/8X1-1/2	0.423	0.675	1-1/2	0.601	0.110
NXG022	3/8X2	0.423	0.675	2	0.601	0.110
NXG02212	3/8X2-1/2	0.423	0.675	2-1/2	0.601	0.110
NXG023	3/8X3	0.423	0.675	3	0.601	0.110
NXG02312	3/8X3-1/2	0.423	0.675	3-1/2	0.601	0.110
NXG024	3/8X4	0.423	0.675	4	0.601	0.110
NXG02412	3/8X4-1/2	0.423	0.675	4-1/2	0.601	0.110
NXG025	3/8X5	0.423	0.675	5	0.601	0.110
NXG02512	3/8X5-1/2	0.423	0.675	5-1/2	0.601	0.110
NXG026	3/8X6	0.423	0.675	6	0.601	0.110
NXG03CL	1/2XCLOSE	0.546	0.840	1-1/8	----	0.129
NXG03112	1/2X1-1/2	0.546	0.840	1-1/2	0.669	0.129
NXG032	1/2X2	0.546	0.840	2	0.782	0.129
NXG03212	1/2X2-1/2	0.546	0.840	2-1/2	0.782	0.129
NXG033	1/2X3	0.546	0.840	3	0.782	0.129
NXG03312	1/2X3-1/2	0.546	0.840	3-1/2	0.782	0.129
NXG034	1/2X4	0.546	0.840	4	0.782	0.129
NXG03412	1/2X4-1/2	0.546	0.840	4-1/2	0.782	0.129
NXG035	1/2X5	0.546	0.840	5	0.782	0.129
NXG03512	1/2X5-1/2	0.546	0.840	5-1/2	0.782	0.129
NXG036	1/2X6	0.546	0.840	6	0.782	0.129
NXG04CL	3/4XCLOSE	0.742	1.050	1-3/8	----	0.135
NXG04112	3/4X1-1/2	0.742	1.050	1-1/2	0.669	0.135
NXG042	3/4X2	0.742	1.050	2	0.794	0.135
NXG04212	3/4X2-1/2	0.742	1.050	2-1/2	0.794	0.135
NXG043	3/4X3	0.742	1.050	3	0.794	0.135
NXG04312	3/4X3-1/2	0.742	1.050	3-1/2	0.794	0.135
NXG044	3/4X4	0.742	1.050	4	0.794	0.135
NXG04412	3/4X4-1/2	0.742	1.050	4-1/2	0.794	0.135
NXG045	3/4X5	0.742	1.050	5	0.794	0.135
NXG04512	3/4X5-1/2	0.742	1.050	5-1/2	0.794	0.135
NXG046	3/4X6	0.742	1.050	6	0.794	0.135
NXG05CL	1XCLOSE	0.957	1.315	1-1/2	----	0.157
NXG052	1X2	0.957	1.315	2	0.906	0.157
NXG05212	1X2-1/2	0.957	1.315	2-1/2	0.985	0.157

Part #	Size	A	B	L	L1	T (min)
NXG053	1X3	0.957	1.315	3	0.985	0.157
NXG05312	1X3-1/2	0.957	1.315	3-1/2	0.985	0.157
NXG054	1X4	0.957	1.315	4	0.985	0.157
NXG05412	1X4-1/2	0.957	1.315	4-1/2	0.985	0.157
NXG055	1X5	0.957	1.315	5	0.985	0.157
NXG05512	1X5-1/2	0.957	1.315	5-1/2	0.985	0.157
NXG056	1X6	0.957	1.315	6	0.985	0.157
NXG06CL	1 1/4XCLOSE	1.278	1.660	1-5/8	----	0.167
NXG062	1 1/4X2	1.278	1.660	2	0.906	0.167
NXG06212	1 1/4X2-1/2	1.278	1.660	2-1/2	1.009	0.167
NXG063	1 1/4X3	1.278	1.660	3	1.009	0.167
NXG06312	1 1/4X3-1/2	1.278	1.660	3-1/2	1.009	0.167
NXG064	1 1/4X4	1.278	1.660	4	1.009	0.167
NXG06412	1 1/4X4-1/2	1.278	1.660	4-1/2	1.009	0.167
NXG065	1 1/4X5	1.278	1.660	5	1.009	0.167
NXG06512	1 1/4X5-1/2	1.278	1.660	5-1/2	1.009	0.167
NXG066	1 1/4X6	1.278	1.660	6	1.009	0.167
NXG07CL	1 1/2XCLOSE	1.5	1.900	1-3/4	----	0.175
NXG072	1 1/2X2	1.5	1.900	2	0.906	0.175
NXG07212	1 1/2X2-1/2	1.5	1.900	2-1/2	1.025	0.175
NXG073	1 1/2X3	1.5	1.900	3	1.025	0.175
NXG07312	1 1/2X3-1/2	1.5	1.900	3-1/2	1.025	0.175
NXG074	1 1/2X4	1.5	1.900	4	1.025	0.175
NXG07412	1 1/2X4-1/2	1.5	1.900	4-1/2	1.025	0.175
NXG075	1 1/2X5	1.5	1.900	5	1.025	0.175
NXG07512	1 1/2X5-1/2	1.5	1.900	5-1/2	1.025	0.175
NXG076	1 1/2X6	1.5	1.900	6	1.025	0.175
NXG08CL	2XCLOSE	1.939	2.375	2	----	0.191
NXG08212	2X2-1/2	1.939	2.375	2-1/2	1.058	0.191
NXG083	2X3	1.939	2.375	3	1.058	0.191
NXG08312	2X3-1/2	1.939	2.375	3-1/2	1.058	0.191
NXG084	2X4	1.939	2.375	4	1.058	0.191
NXG08412	2X4-1/2	1.939	2.375	4-1/2	1.058	0.191
NXG085	2X5	1.939	2.375	5	1.058	0.191
NXG08512	2X5-1/2	1.939	2.375	5-1/2	1.058	0.191
NXG086	2X6	1.939	2.375	6	1.058	0.191